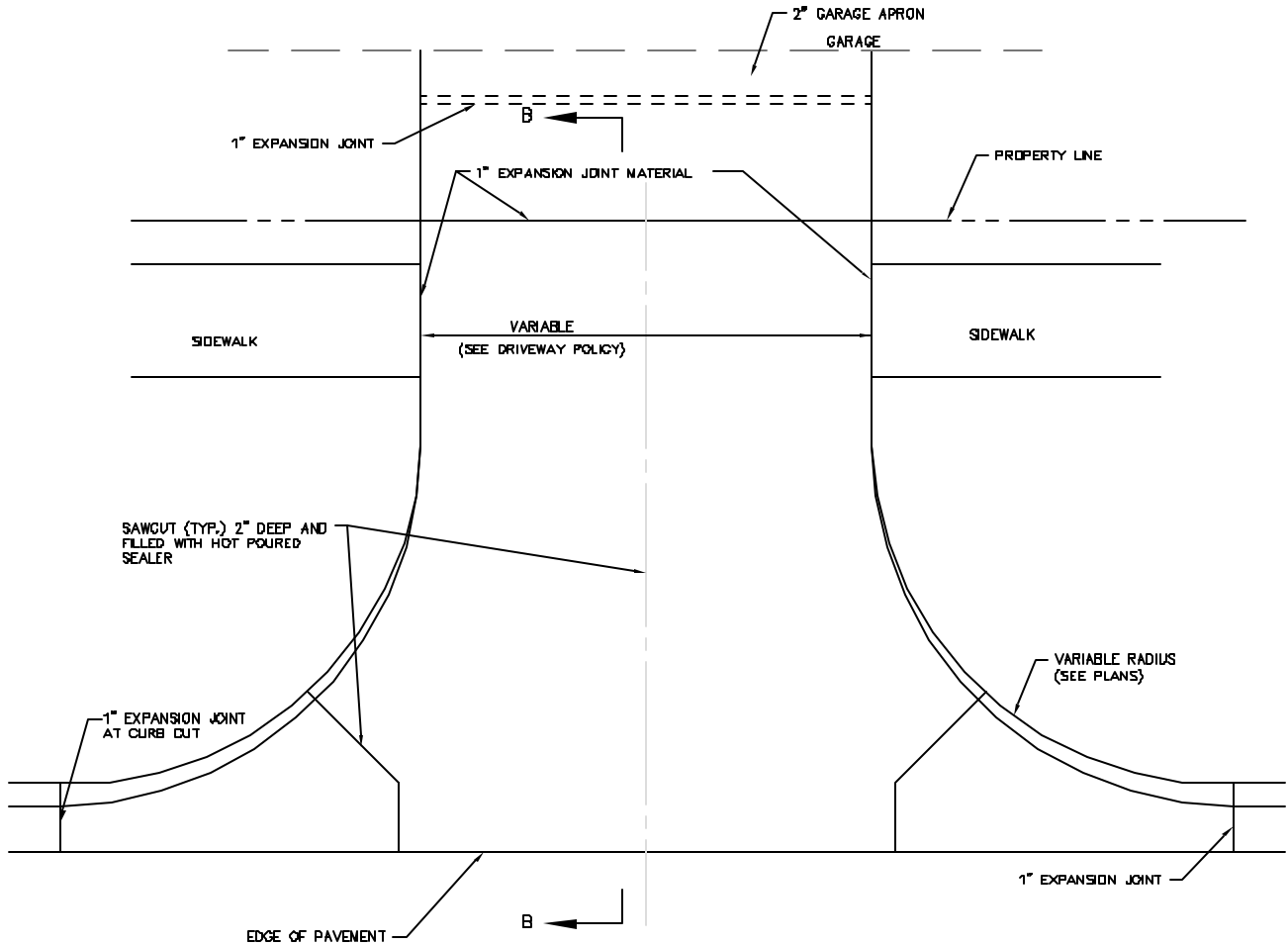


SECTION B-B



NEW CONSTRUCTION

NOTES:

1. A 5'-0" MINIMUM RADIUS IS APPROVED FOR ONE & TWO FAMILY RESIDENCES NOT ABUTTING A LIMITED ACCESS OR MAJOR STREET. ALL OTHER DRIVEWAYS WILL HAVE A 10'-0" MIN. RADIUS.
2. SHOULD A DIFFERENT CURB & GUTTER SECTION BE USED (OTHER THAN SHOWN) REFER TO THE CURB & GUTTER DETAIL FOR DIMENSIONS.
3. ALL DRIVEWAYS SHALL BE A MINIMUM 6" PORTLAND CEMENT CONCRETE WITH A 28 DAY COMPRESSION STRENGTH OF 3500 PSI.
4. FOR ONE AND TWO FAMILY RESIDENCES, THE WIDTH OF DRIVEWAYS SHALL BE 30' MAXIMUM AND 20' MINIMUM. WIDTHS MAY BE 18' FOR DRIVEWAYS ON CUL-DE-SACS, FOR CIRCLE DRIVES, OR DRIVEWAYS OVER 40' IN LENGTH IF PROVISIONS ARE MADE FOR PARKING TWO CARS SIDE-BY-SIDE ON THE PRIVATE PORTION OF THE DRIVE. ALL OTHERS SHALL HAVE A 24' MINIMUM AND A 35' MAXIMUM. WIDTHS MAY BE 20' MINIMUM FOR ONE-WAY ONLY ENTRANCE OR EXIT.
5. EXPANSION JOINTS OR DRIVEWAY RETURNS SHALL BE FULL EXPANSION JOINTS EXTENDING COMPLETELY ACROSS THE STREET.

REVISIONS	NO.	DATE	ITEM CHANGED

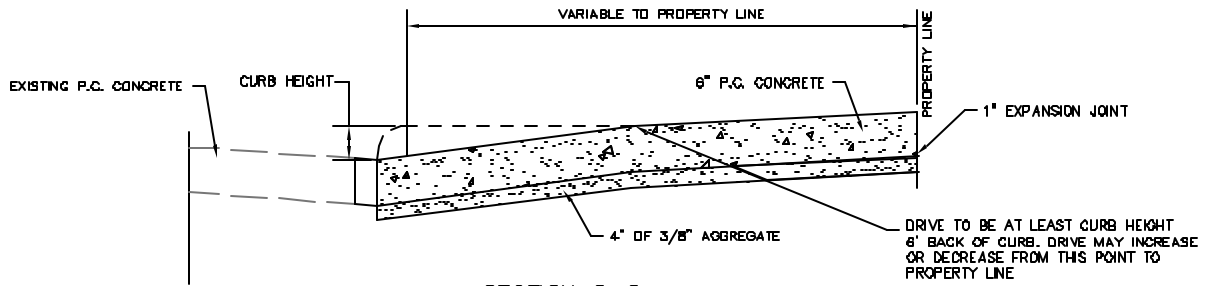
CITY OF EDMOND  
ENGINEERING DEPARTMENT  
CONSTRUCTION STANDARDS

P.C. DRIVEWAY

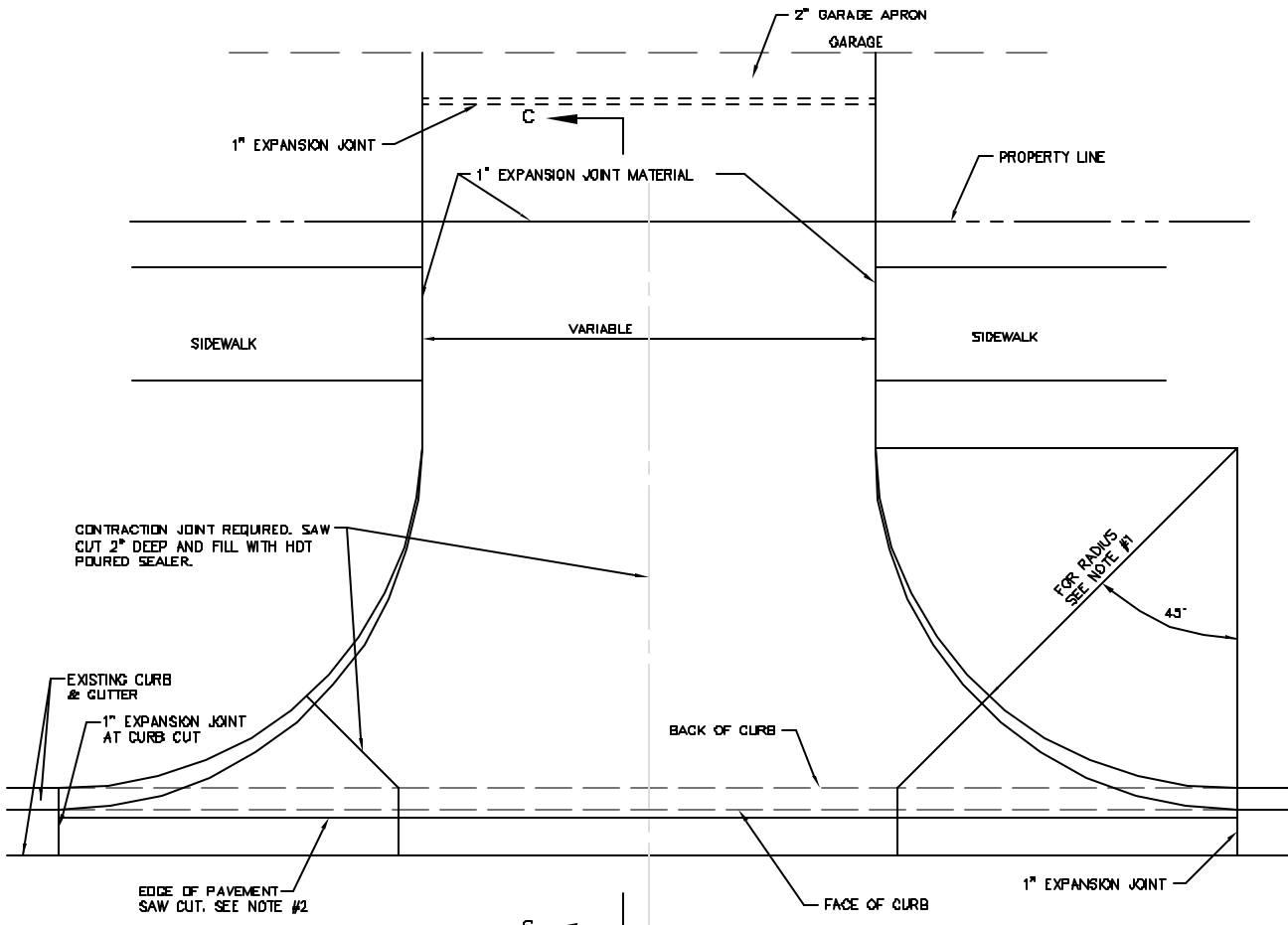
PAVING

SPECIFICATION NO. 610

DW-01 PAGE 56



SECTION C-C



EXISTING CONSTRUCTION

NOTES:

1. A 5'-0" MINIMUM RADIUS IS APPROVED FOR ONE & TWO FAMILY RESIDENCES NOT ABUTTING A LIMITED ACCESS OR MAJOR STREET. ALL OTHER DRIVEWAYS WILL HAVE A 15'-0" MIN. RADIUS.
2. THE DRIVEWAY CONTRACTORS MAY SAW CUT & REMOVE THE COMPLETE CURB & GUTTER SECTION OR THE CURB ONLY. SAW CUTS SHALL BE 2" OR 1/3 THE DEPTH OF THE GUTTER, WHICHEVER IS GREATER. SAW CUTS SHALL INCLUDE THE TOP & FACE OF CURB AS WELL AS THE GUTTER. SAW CUTS SHALL BE MADE PRIOR TO THE REMOVAL OF CONCRETE.
3. IF EXISTING GUTTER HOLDS WATER, THE CONTRACTOR SHALL NOTIFY THE CITY ENGINEER BEFORE STARTING WORK. THE NEW WORK WILL NOT BE ACCEPTED IF THE GUTTER HOLDS WATER ACROSS THE DRIVE OR ON EITHER SIDE.
4. IT IS RECOGNIZED THAT THIS DRIVEWAY DETAIL WILL NOT COVER EVERY POSSIBLE SITUATION ENCOUNTERED IN CONSTRUCTION. ADDITIONAL EXPANSION JOINTS WILL BE REQUIRED AS NEEDED.
5. FOR ONE AND TWO FAMILY RESIDENCES, THE WIDTH OF DRIVEWAYS SHALL BE 30' MAXIMUM AND 20' MINIMUM. WIDTHS MAY BE 18' FOR DRIVEWAYS ON CUL-DE-SACS, FOR CIRCLE DRIVES, OR DRIVEWAYS OVER 40' IN LENGTH IF PROVISIONS ARE MADE FOR PARKING TWO CARS SIDE-BY-SIDE ON THE PRIVATE PORTION OF THE DRIVE. ALL OTHERS SHALL HAVE A 24' MINIMUM AND A 35' MAXIMUM. WIDTHS MAY BE 20' MINIMUM FOR ONE-WAY ONLY ENTRANCE OR EXIT.
6. ALL DRIVEWAYS SHALL BE A MINIMUM 5" PORTLAND CEMENT CONCRETE WITH A 28 DAY COMPRESSION STRENGTH OF 3500 PSL.
7. CLEAN & SEAL ALL JOINTS & SAW CUTS IN ACCORDANCE WITH STANDARD SPECIFICATIONS.
8. CURB CUTS EXCEEDING 35' MUST BE APPROVED BY THE CITY ENGINEER.
9. IF DRIVEWAY IS TO BE CONSTRUCTED OVER A BARDITCH, A DRAINAGE PIPE SHALL BE INSTALLED WITH EITHER A SLOPING OR A WINGWALLED CONCRETE HEADWALL BOTH UP AND DOWNSTREAM. THE PIPE SHALL BE SIZED BY A REGISTERED PROFESSIONAL ENGINEER, AND SHALL CONVEY THE 100 YEAR FLOOD WATERFLOW.

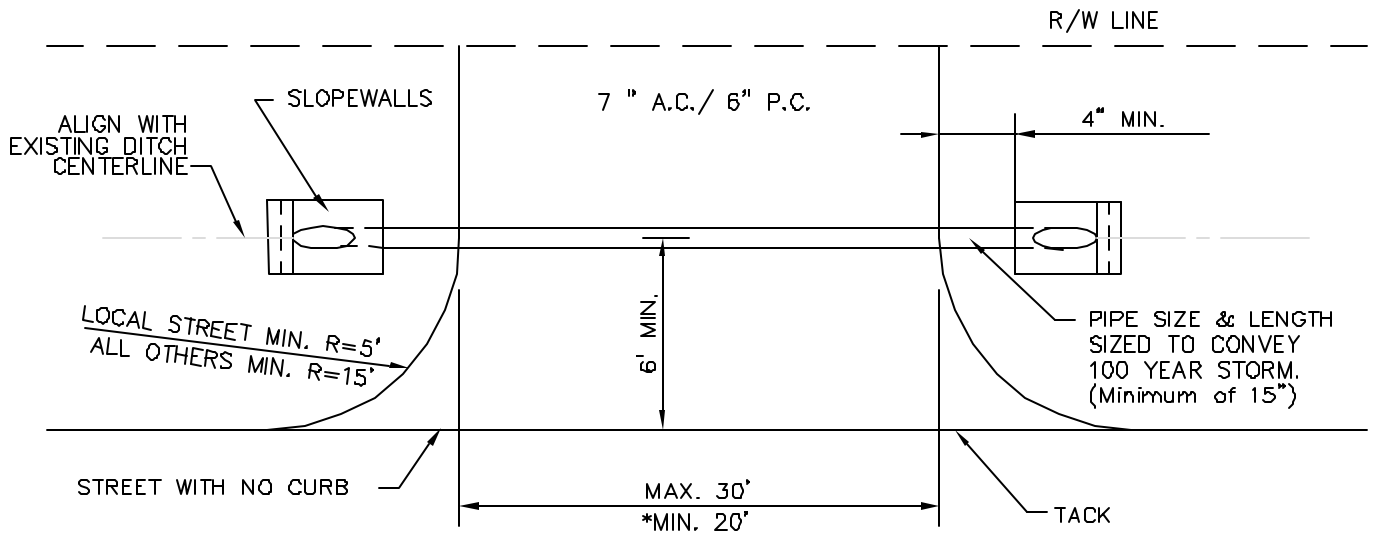
REVISIONS	NO.	DATE	ITEM CHANGED

CITY OF EDMOND  
ENGINEERING DEPARTMENT  
CONSTRUCTION STANDARDS

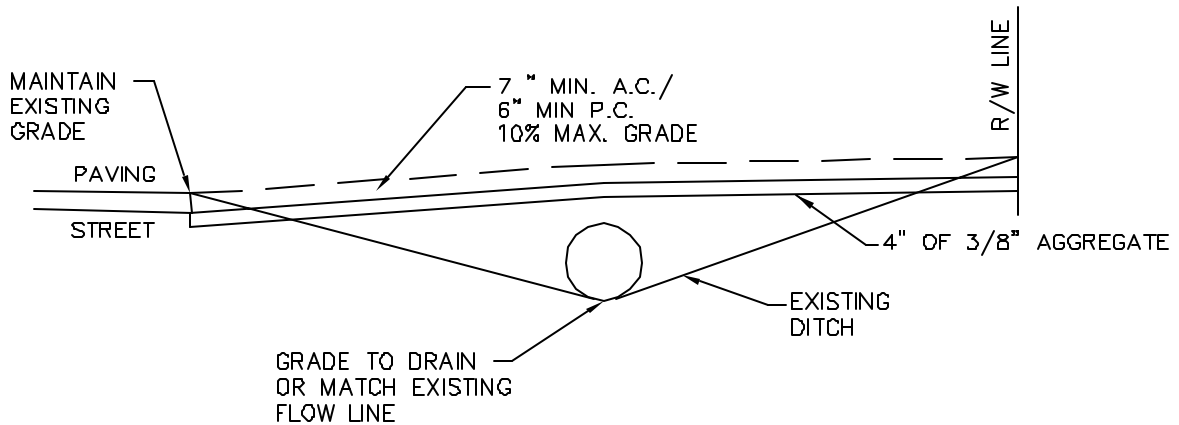
P.C. DRIVEWAY  
(EXIST. CURB & GUTTER)

PAVING  
SPECIFICATION NO. 610  
DW-02 PAGE 57

STANDARD SPECIFICATIONS FOR CONSTRUCTION  
 DECEMBER 31, 2001 REBER

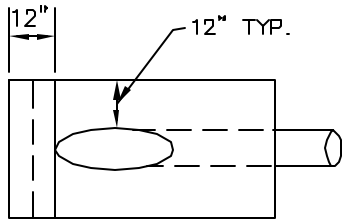


\*WIDTHS MAY BE 16' FOR DRIVEWAYS ON CUL-DE-SACS, CIRCLE DRIVES, OR DRIVEWAYS OVER 40' IN LENGTH IF PROVISIONS ARE MADE FOR PARKING TWO VEHICLES SIDE-BY-SIDE ON THE PRIVATE PORTION OF THE DRIVE.

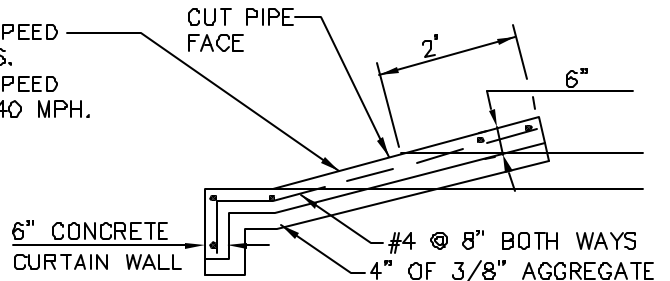


### DRIVEWAY SECTION

4:1 FOR ROADS WITH A SPEED LIMIT OF 40 MPH OR LESS.  
6:1 FOR ROADS WITH A SPEED LIMIT OF GREATER THAN 40 MPH.



PLAN



ELEVATION

### CONCRETE SLOPEWALL

REVISIONS	NO.	DATE	ITEM CHANGED
◇	1	7/28/2004	ADDED AGGREGATE

**CITY OF EDMOND**  
ENGINEERING DEPARTMENT  
CONSTRUCTION STANDARDS

**RESIDENTIAL DRIVEWAY ON  
STREET WITHOUT CURB**

**PAVING**

SPECIFICATION NOS. 411 & 610  
DW-03 PAGE 58